



Facilities Update

DECEMBER 20TH, 2018

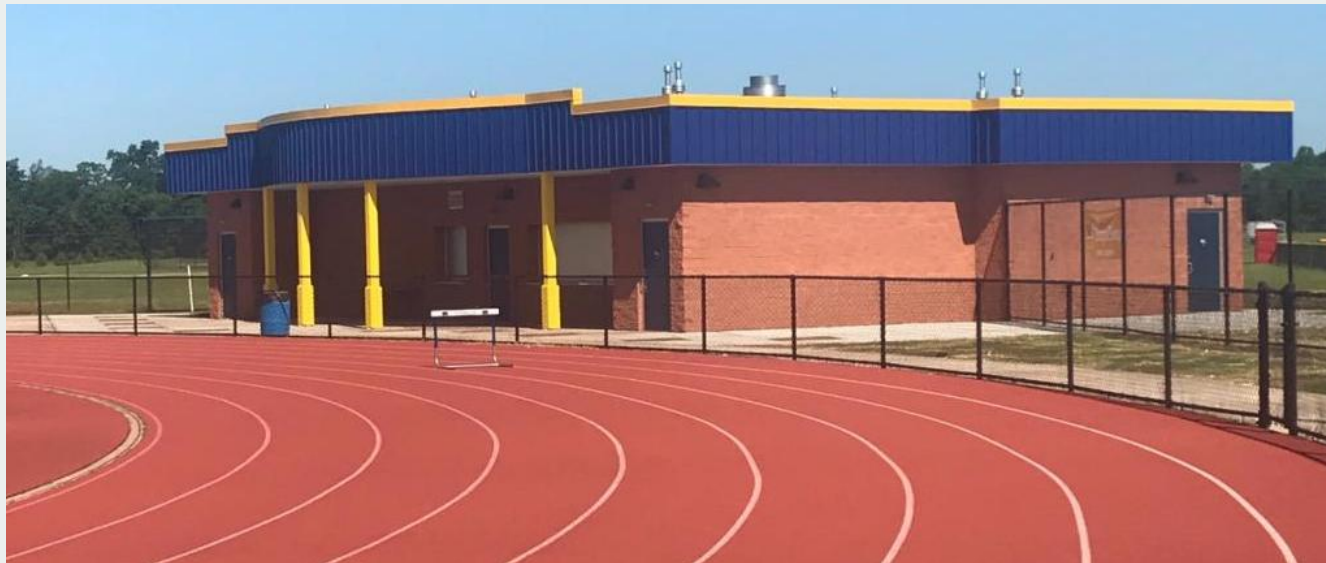


DRG Architects

200 Franklin Square Drive, Suite 402
Somerset, NJ 08873

Franklin High School Concessions

<u>Project Status</u>	Completed	<u>Scope</u>	Project includes the construction of a new Concessions Building adjacent to the stadium of the high school. The building will have concession windows facing both the stadium and the adjacent baseball and playing fields.
<u>Contractor</u>	GL Group, Inc.	<u>Summary</u>	Interior punch list items have been completed. The pricing for the pipe enclosure was approved, and the GC is proceeding.
<u>Total Budget</u>	\$954,250.00	<u>Contract</u>	\$1,144,000.00
<u>Substantial Completion</u>	June 2018	<u>New Contract Amount</u>	\$1,145,125.85



Franklin High School Tennis Courts

<u>Project Status</u>	Completed	<u>Scope</u>	Complete reconstruction of the six (6) existing tennis courts.
<u>Contractor</u>	Halecon	<u>Summary</u>	The project was awarded to Halecon of Bridgewater, NJ. All work has been completed and this is now in project close-out.
<u>Total Budget</u>	\$840,000.00	<u>Contract</u>	\$847,917.00
<u>New Contract Amount</u>	\$811,484.25		



MacAfee Road Elementary School Toilet Renovations

<u>Project Status</u>	Completed	<u>Scope</u>	Project includes the renovation of four (4) gang Toilet Rooms—in order to make them ADA compliant (similar to the renovations to the toilet rooms at the Pine Grove Manor School).
<u>Contractor</u>	Nadiad Inc.	<u>Summary</u>	All work in the Toilet Rooms has been completed. The GC is completing any remaining Punch List items.
<u>Total Budget</u>	\$367,000.00	<u>Contract</u>	\$323,000.00
<u>New Contract Amount</u>	\$355,058.85		



MacAfee Road Elementary School Toilet Renovations



Conerly Road Elementary School Site Improvements

<u>Project Status</u>	Completed	<u>Scope</u>	Project includes repair to a ramp (and railings) at the rear of the school building.
<u>Contractor</u>	Nadiad Inc.	<u>Summary</u>	All work is complete. The Punch List was forwarded to the GC.
<u>Total Budget</u>	\$35,000.00	<u>Contract</u>	Contract amount was combined with the MacAfee Toilet Rooms.



Conerly Road Elementary School Site Improvements

After



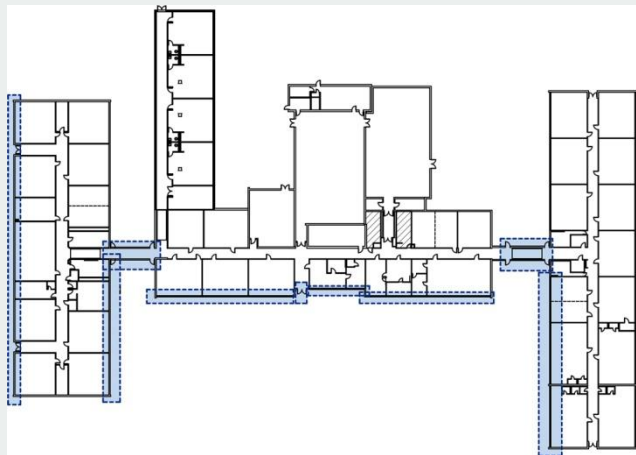
After



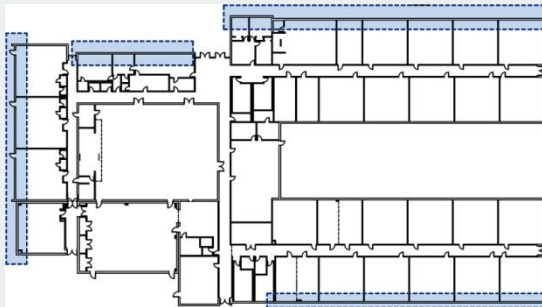
District-wide Windows/Door Replacements

<u>Project Status</u>	Under Construction	<u>Scope</u>	Complete reconstruction of the six (6) existing tennis courts.
<u>Contractor</u>	Panoramic Window and Door Systems, Inc.	<u>Summary</u>	The windows for the Hillcrest School are ready for installation. A meeting was held at the school on October 26th—with the District and School Administrators, the GC, as well as Eric Clarkson from AHERA, the District's environmental engineer—in order to discuss the scheduling of the abatement and the installation of the new windows. Work at Hillcrest is in progress (see picture below). The windows at Conerly will be scheduled next with MacAfee the last school to have the new windows installed.
<u>Total Budget</u>	\$1,700,000.00	<u>Contract</u>	\$1,399,000.00

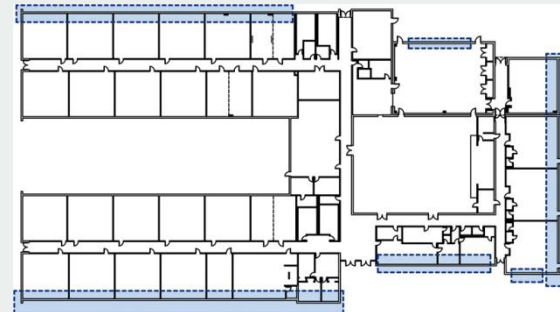
Hillcrest Elementary School | Budget: \$645,200.00




MacAfee Road Elementary School Budget: \$376,900.00



Conerly Road Elementary School Budget: \$376,900.00



Legend  Windows/Doors Replacements

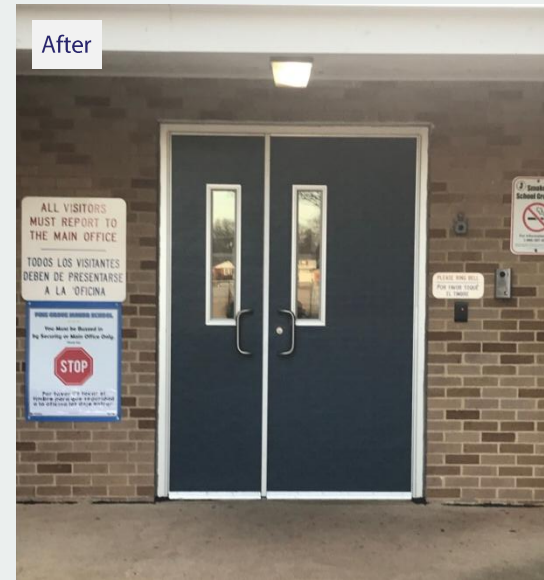
District-wide Windows/Door Replacements

Hillcrest Elementary School

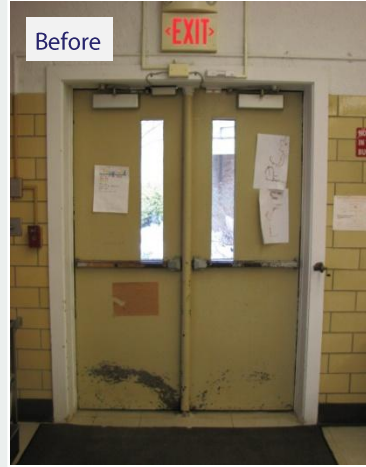


Pine Grove Manor Exterior Door Replacements

<u>Project Status</u>	Completed	<u>Scope</u>	Replace the exterior doors at the Pine Grove Manor School, with an alternate bid to replace several of the interior wood flush doors.
<u>Contractor</u>	Jersey Architectural Door & Supply	<u>Summary</u>	The replacement of the doors is nearly completed. Work has been completed and a Punch List walk-through will be done the first week of January.
<u>Total Budget</u>	\$128,000.00	<u>Contract</u>	\$161,702.00



Pine Grove Manor Exterior Door Replacements

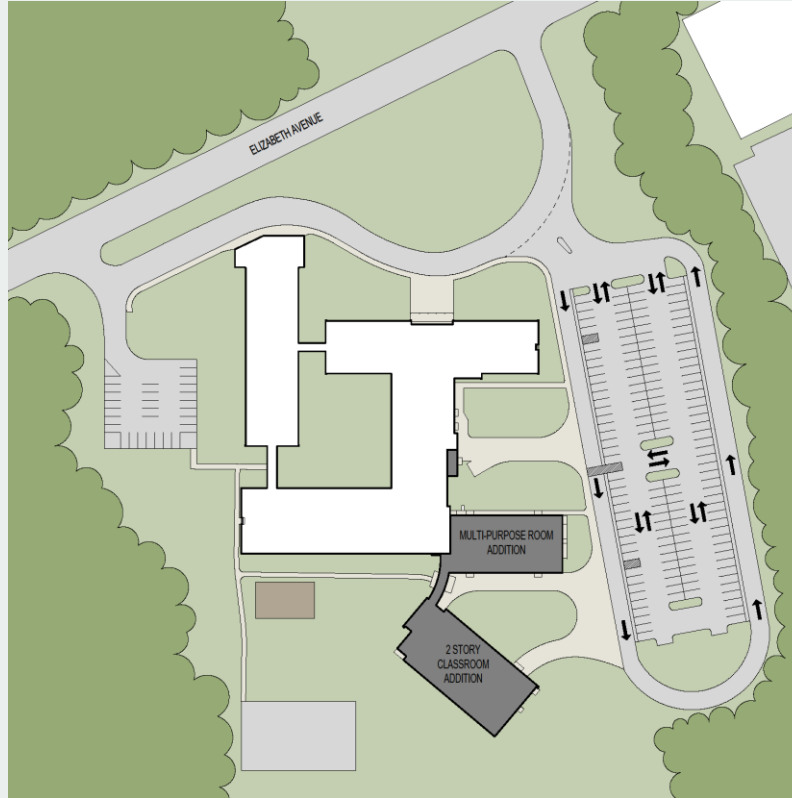


Elizabeth Avenue Elementary School

<u>Project Status</u>	Partially Completed	<u>Scope</u>	<p>Project includes the replacement of the existing unit ventilators at Elizabeth Avenue.</p> <p>Project includes providing an enlarged Multi-Purpose Room, Cafeteria and Kitchen and reconfiguring the spaces now occupied by the Media Center and the Lobby/Admin spaces.</p> <p>Project includes the addition of new Pre-Kindergarten, Kindergarten and upper level Classrooms and all required ancillary spaces.</p>
<u>Contractor</u>	Patock Construction	<u>Summary</u>	Additions and site work are complete; new kitchen expected to be on line January 2019.
<u>Total Budget</u>	\$11,203,144.00	<u>Contract</u>	\$12,024,314.00
<u>Substantial Completion</u>	MP Room: December 2017; Addition: April 2018; Renovation: September 2018	<u>New Contract Amount</u>	\$12,755,098.72

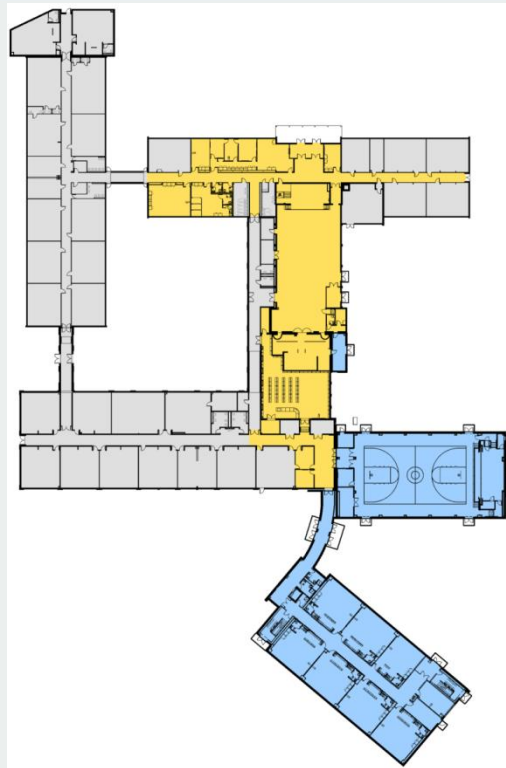
Elizabeth Avenue Elementary School

Site Plan



Elizabeth Avenue Elementary School

Floor Plan



First Floor Plan



Second
Floor Plan

Legend

-  Additions
-  Renovations
-  Existing Conditions

Elizabeth Avenue Elementary School

Renovated Hallway

Before



After



Elizabeth Avenue Elementary School

Renovated Lobby

Before



After



After



Elizabeth Avenue Elementary School

Renovated Main Office

Before



After



Elizabeth Avenue Elementary School

Renovated Classrooms

Before



After



After



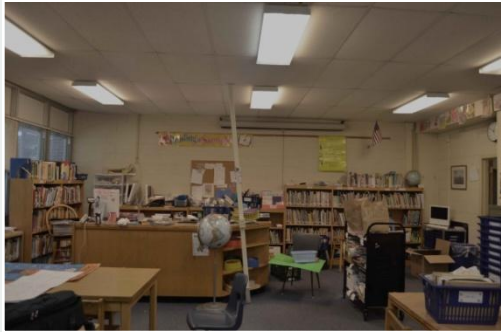
Elizabeth Avenue Elementary School

Renovated Media Center

After



Before



After



After



Elizabeth Avenue Elementary School

Rendering



Elizabeth Avenue Elementary School

Finished Additions



Elizabeth Avenue Elementary School

Rendering



Elizabeth Avenue Elementary School

Finished Addition



Elizabeth Avenue Elementary School

Parking Lot Expansion



Elizabeth Avenue Elementary School

Multi-Purpose Room



Elizabeth Avenue Elementary School

Corridors in New Addition



Elizabeth Avenue Elementary School

Classrooms





DRG Architects

200 Franklin Square Drive, Suite 402
Somerset, NJ 08873